

Georgia Bioenergy Conference

August 3, 2006

**University of Georgia
Tifton, GA**

**Bill Holbrook
The ProExporter Network**

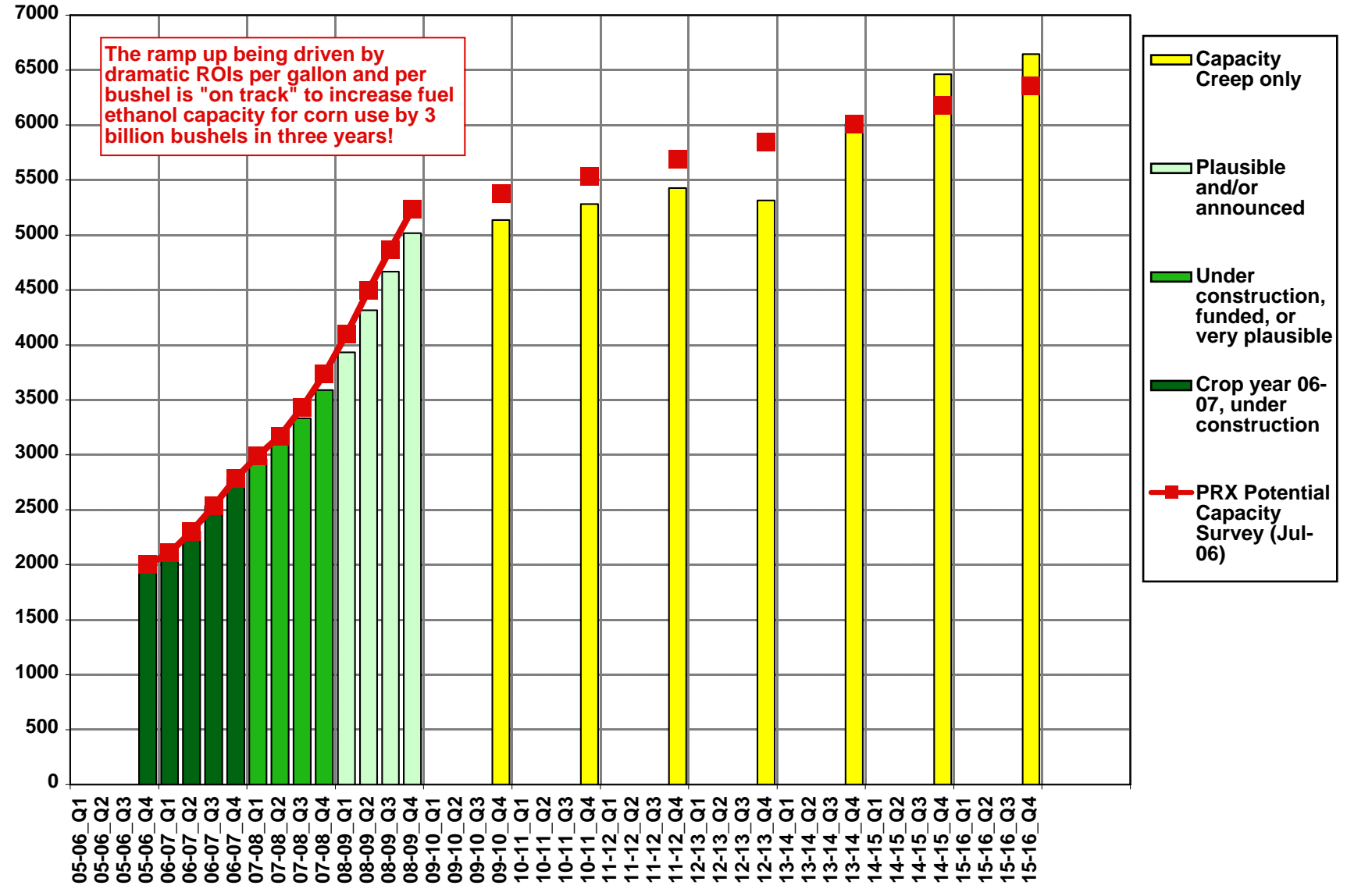
US CORN ETHANOL PRODUCTION BY QUARTER, CROP YEAR 05-06 TO 15-16

SCENARIO with CURRENT HIGH ETHANOL PRICE, CORN PRICE RISING TO IDLE SOME CAPACITY

Million Bushels, Dry and Wet Ethanol Milling

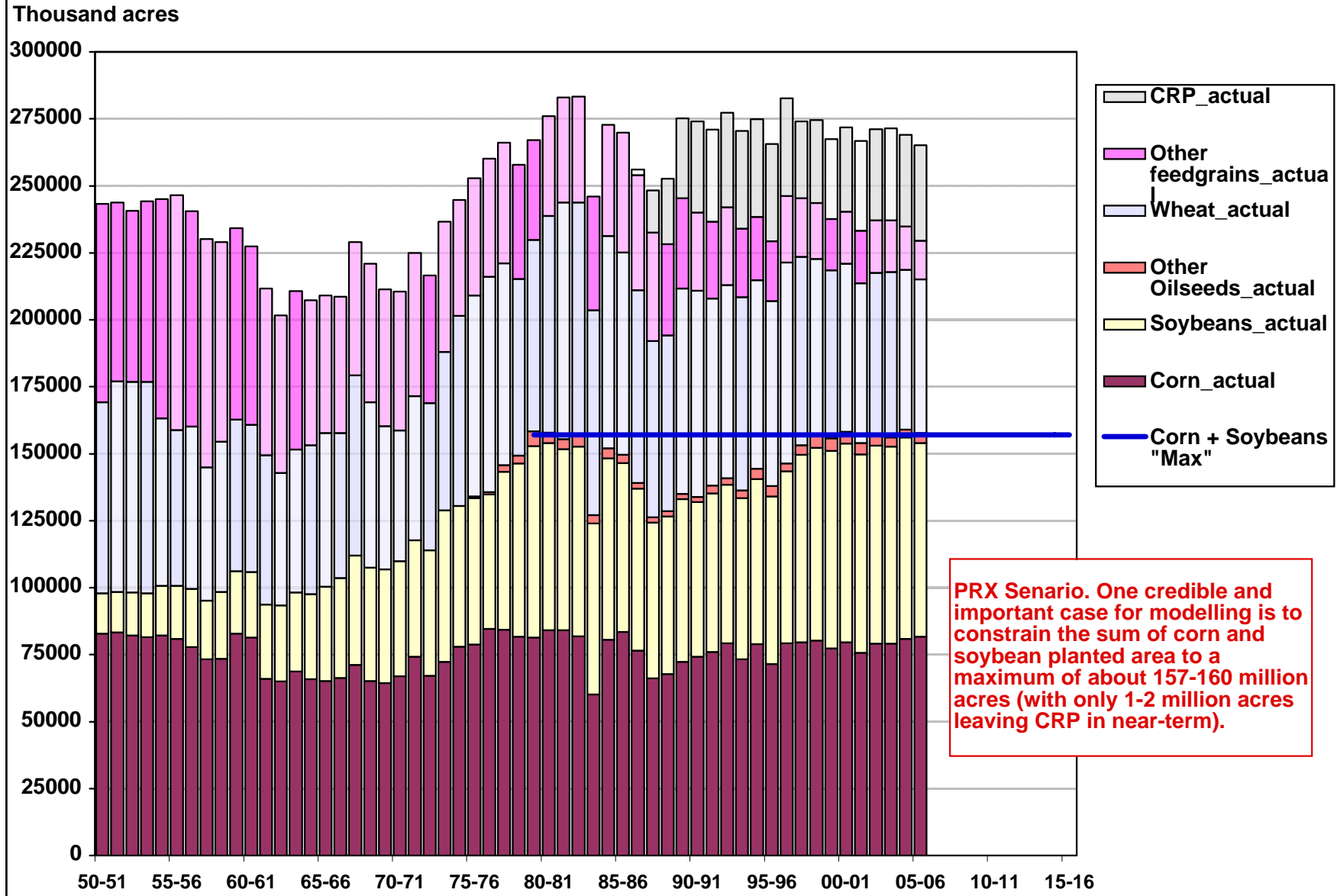
PRX_EthanolQtrAnal, GTB-06-07, Jul-19-06

The ramp up being driven by dramatic ROIs per gallon and per bushel is "on track" to increase fuel ethanol capacity for corn use by 3 billion bushels in three years!



US MAJOR CROPS PLANTED AREA

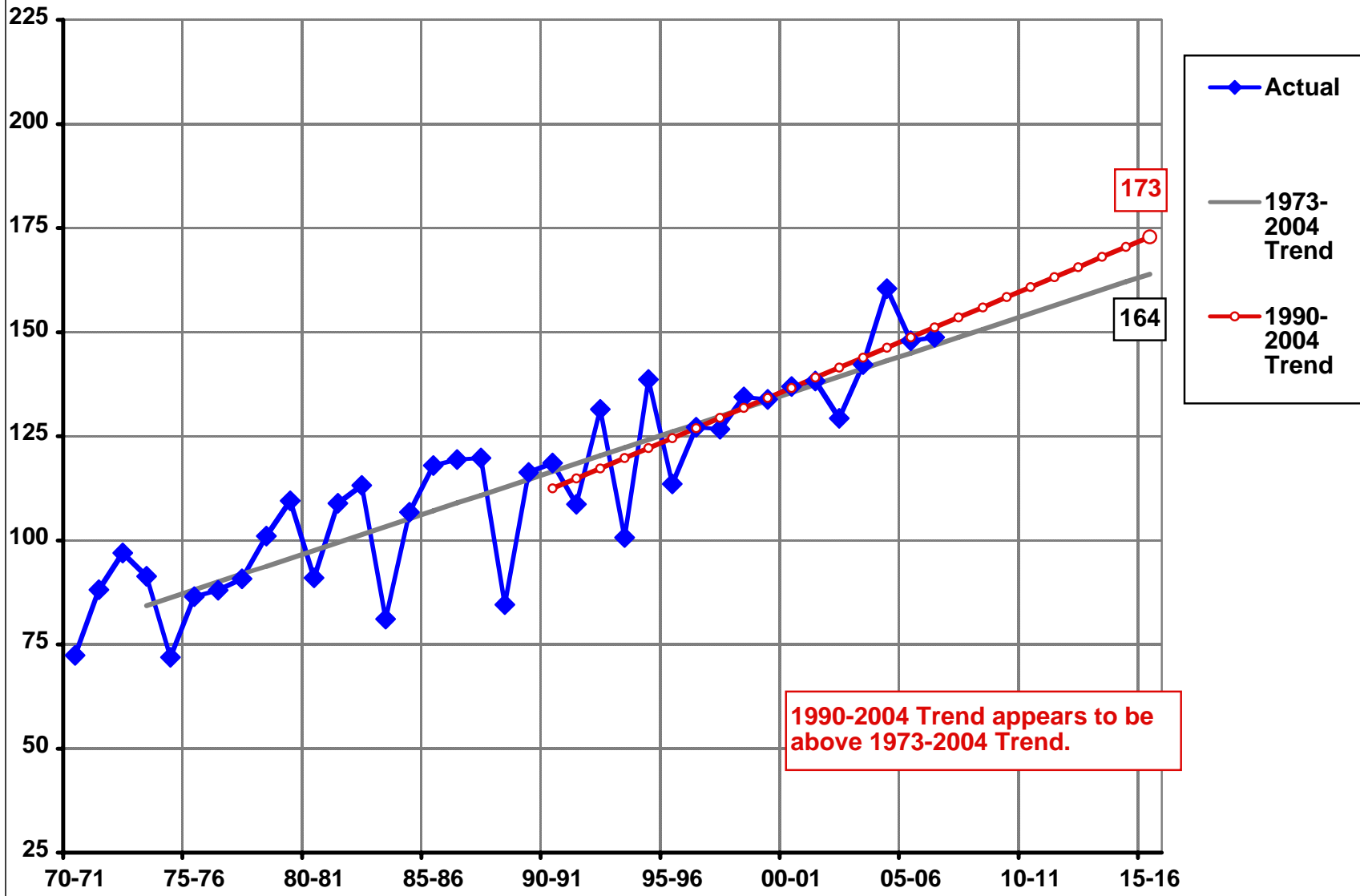
PRX_US_APanal, GTB-06-07, Jul-19-06



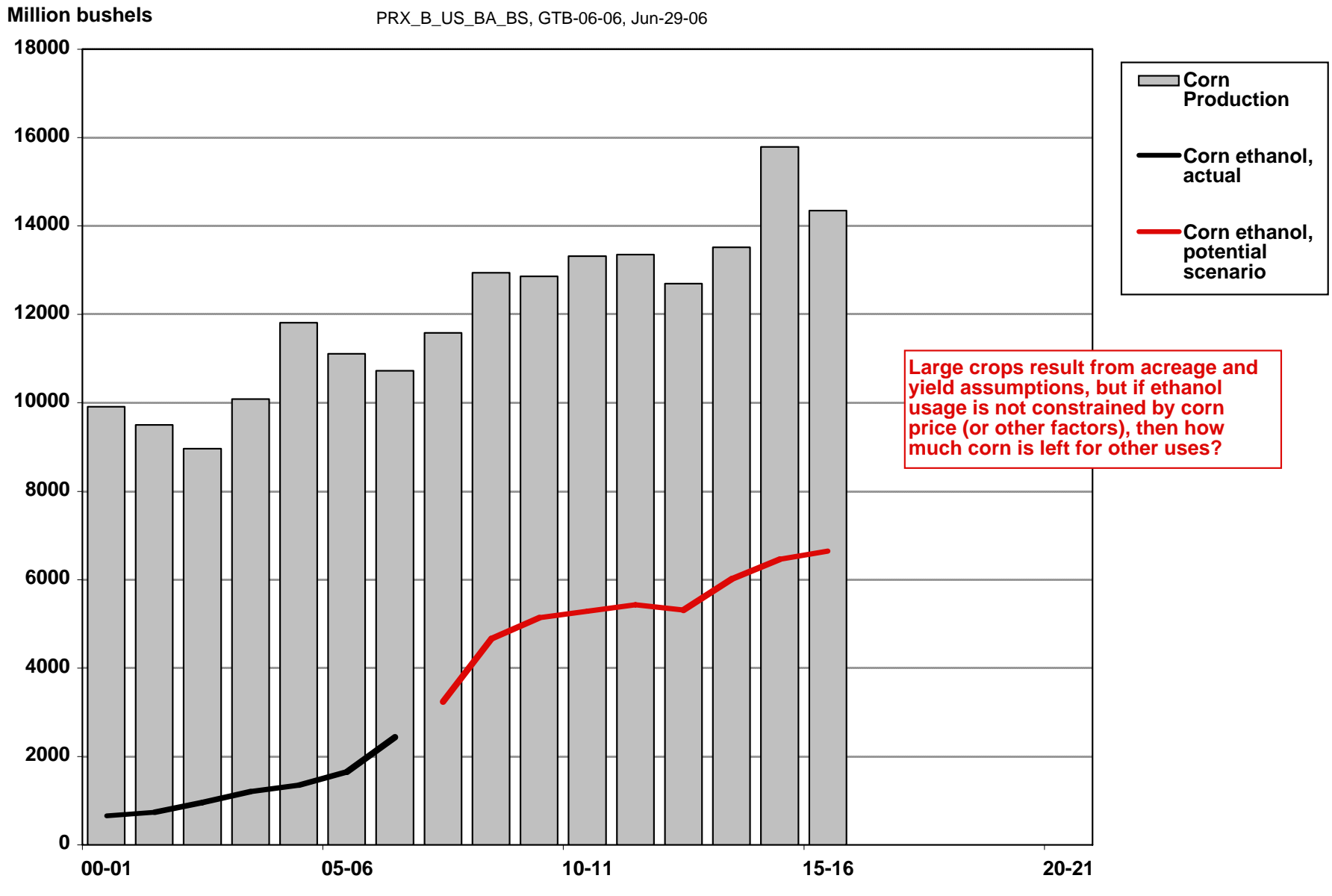
UNITED STATES CORN YIELD

PRX_B_US_BA_BS, GTB-06-06, Jun-29-06

Bushels per harvested acre



CORN PRODUCTION & FUEL ETHANOL EXPANSION, 2000-2015, BLUE SKY SCENARIO

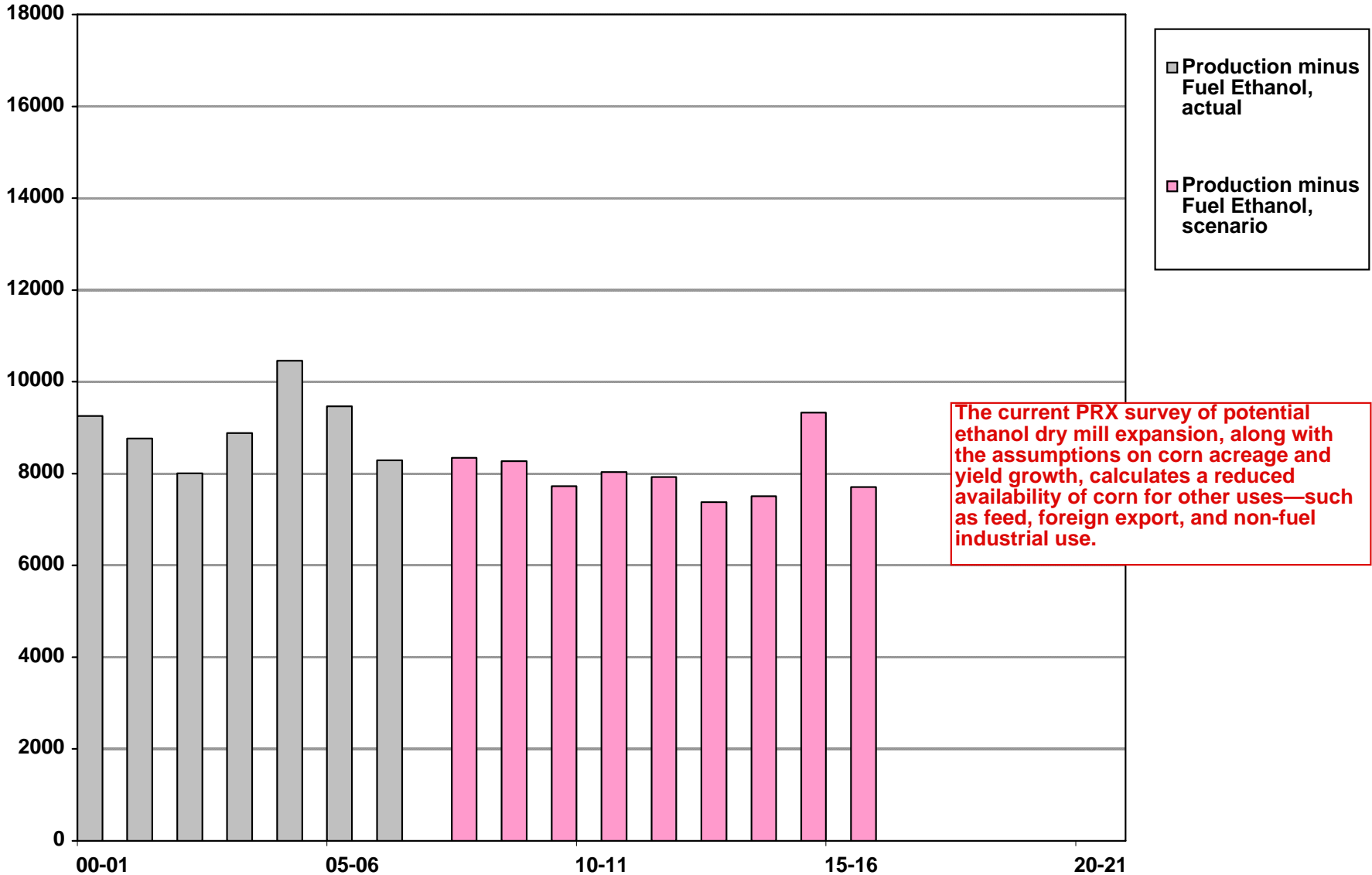


Large crops result from acreage and yield assumptions, but if ethanol usage is not constrained by corn price (or other factors), then how much corn is left for other uses?

CORN PRODUCTION MINUS FUEL ETHANOL DEMAND, 2000-2015, BLUE SKY SCENARIO

Million bushels

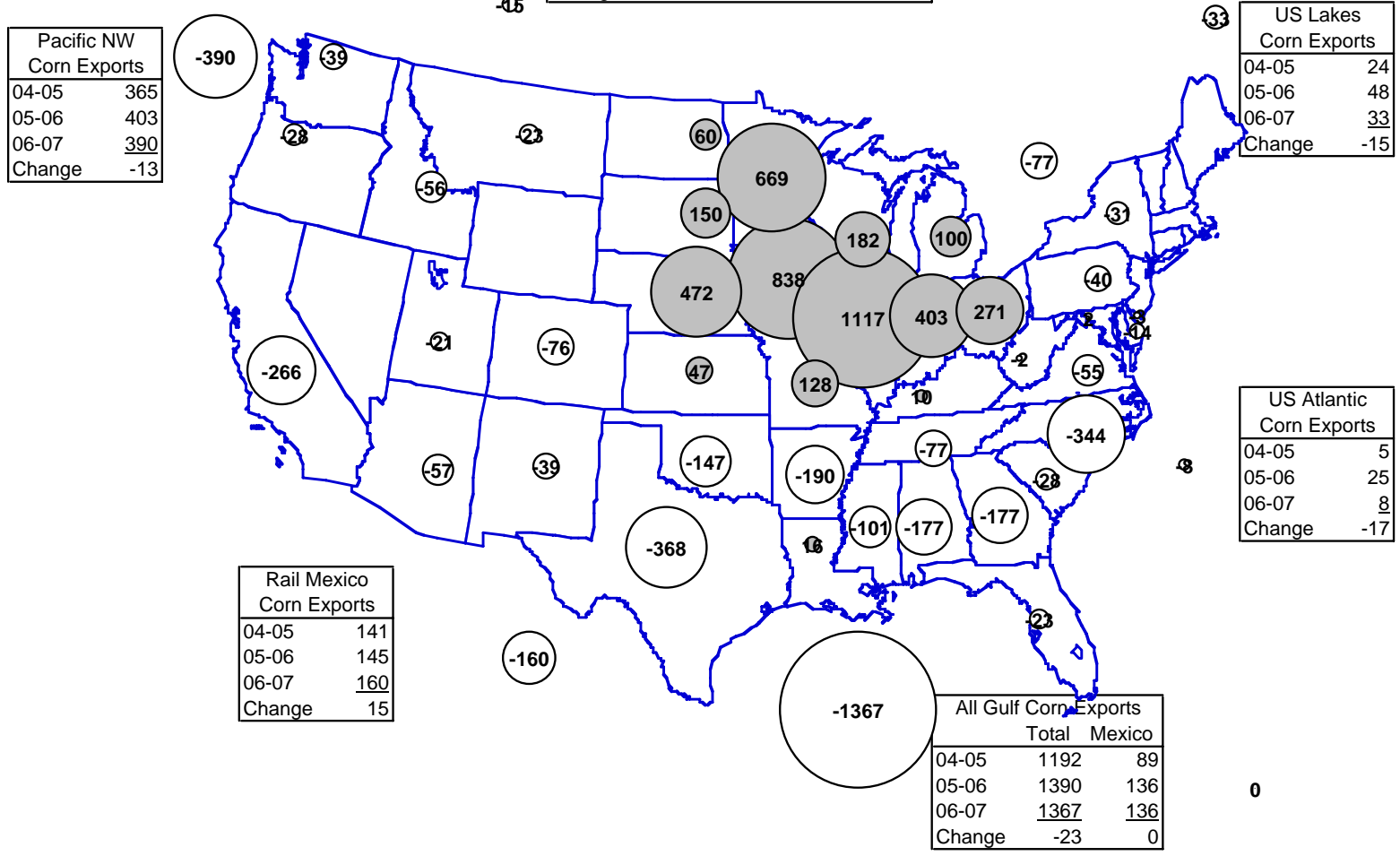
PRX_B_US_BA_BS, GTB-06-06, Jun-29-06



The current PRX survey of potential ethanol dry mill expansion, along with the assumptions on corn acreage and yield growth, calculates a reduced availability of corn for other uses—such as feed, foreign export, and non-fuel industrial use.

CORN NET EXPORTS (+) AND NET IMPORTS (-), 06-07

	Rail & Truck		Lakes	Total
	WestCN	EastCN	EastCN	AllCN
04-05	15	65	10	78
05-06	22	42	6	91
06-07	<u>15</u>	<u>77</u>	<u>11</u>	<u>71</u>
Change	-7	35	5	-20



CORN NET EXPORTS (+) AND NET IMPORTS (-), 15-16

	Rail & Truck		Lakes	Total
	WestCN	EastCN	EastCN	AllCN
13-14	15	44	7	119
14-15	18	53	8	142
15-16	<u>19</u>	<u>55</u>	<u>9</u>	<u>149</u>
Change	1	3	0	7

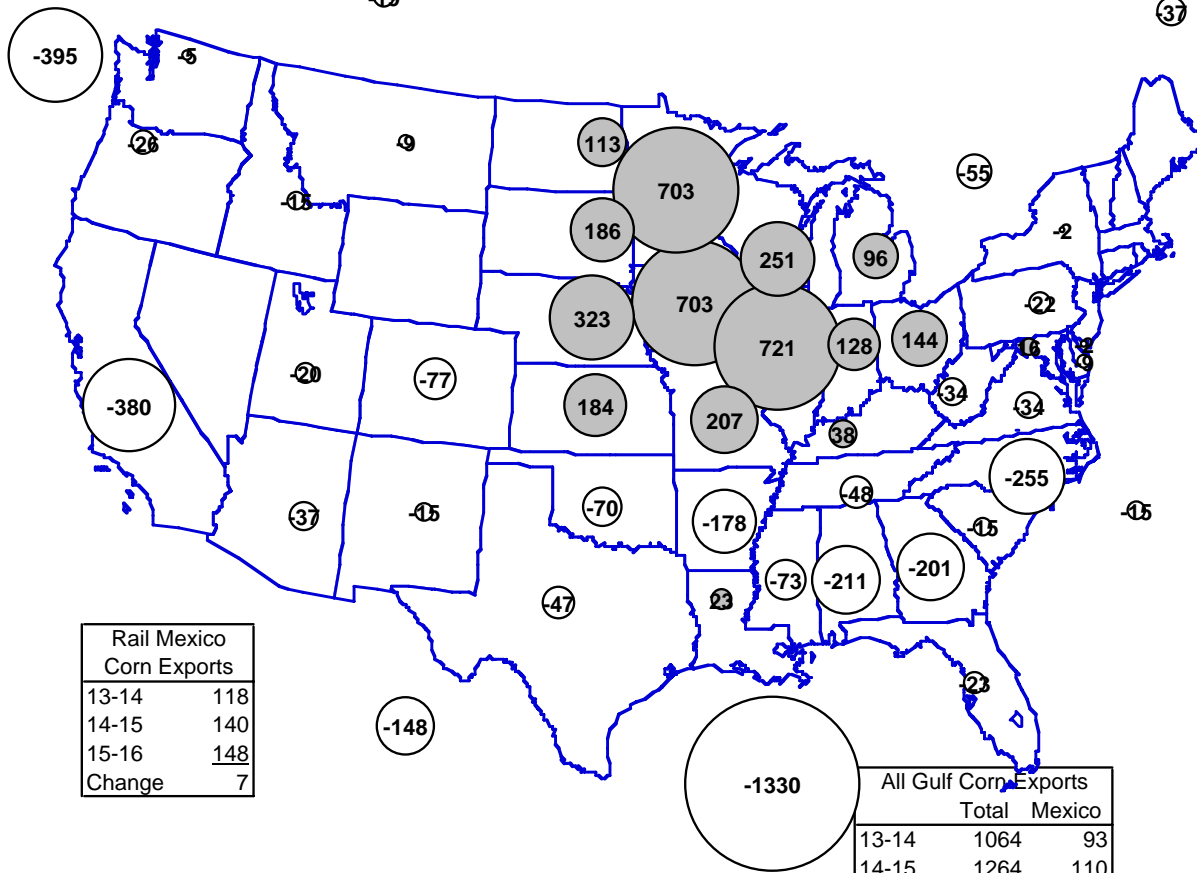
Pacific NW Corn Exports	
13-14	316
14-15	376
15-16	<u>395</u>
Change	20

US Lakes Corn Exports	
13-14	29
14-15	35
15-16	<u>37</u>
Change	2

US Atlantic Corn Exports	
13-14	12
14-15	14
15-16	<u>15</u>
Change	1

Rail Mexico Corn Exports	
13-14	118
14-15	140
15-16	<u>148</u>
Change	7

	All Gulf Corn Exports Total Mexico	
	Total	Mexico
13-14	1064	93
14-15	1264	110
15-16	<u>1330</u>	<u>116</u>
Change	67	6



Georgia Planted Acreage

