



COMMODITY SPECIALISTS COMPANY

Agricultural Commodity Experts

www.csc-world.com

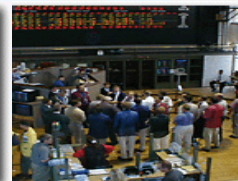
Steve Markham

Sean Broderick Jim Montbriand Matt Fitzthum

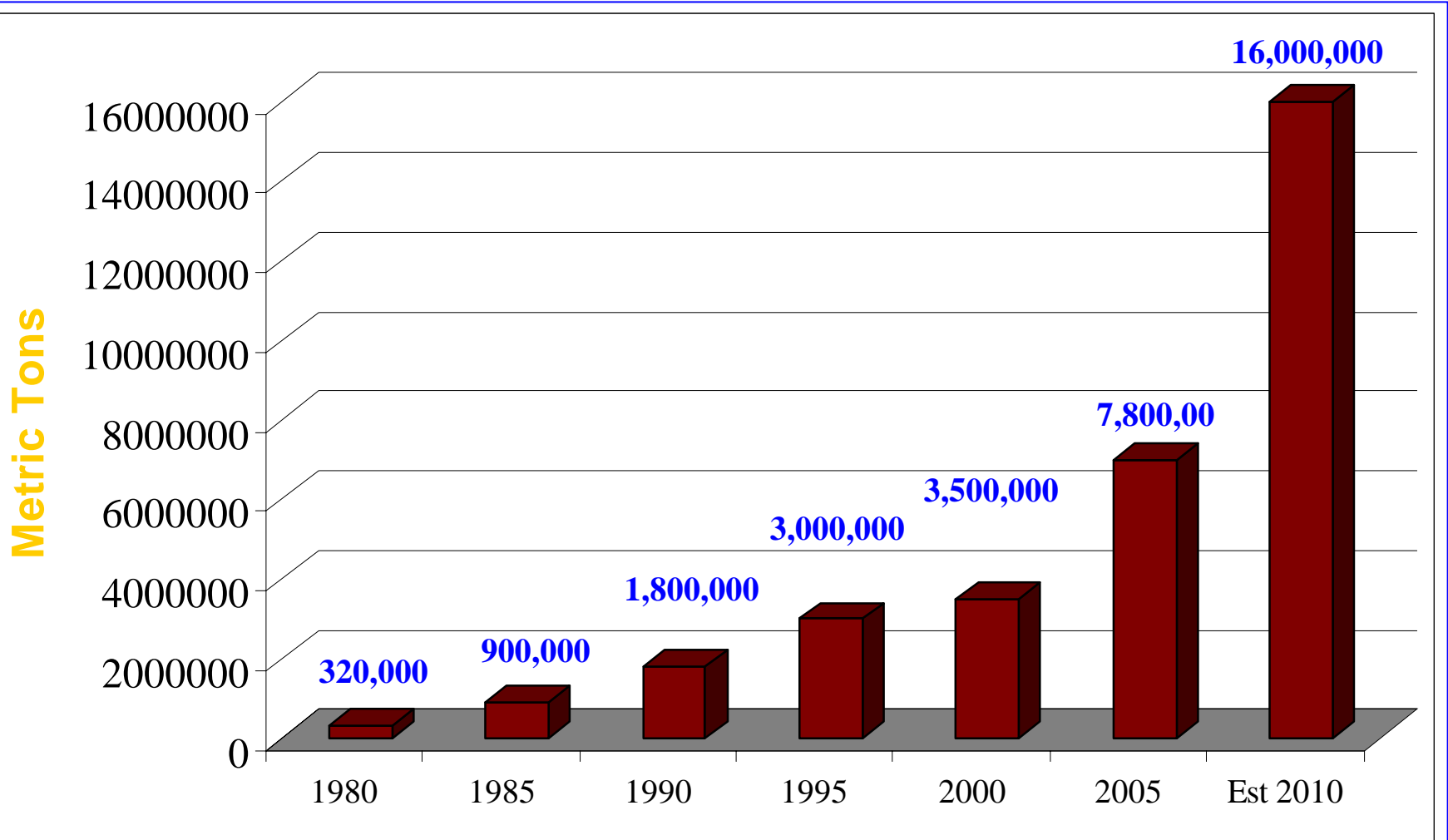
400 So. 4th St., 310 Grain Exchange Bldg., Mpls., MN 55415

612-330-9130 1-800-769-1066

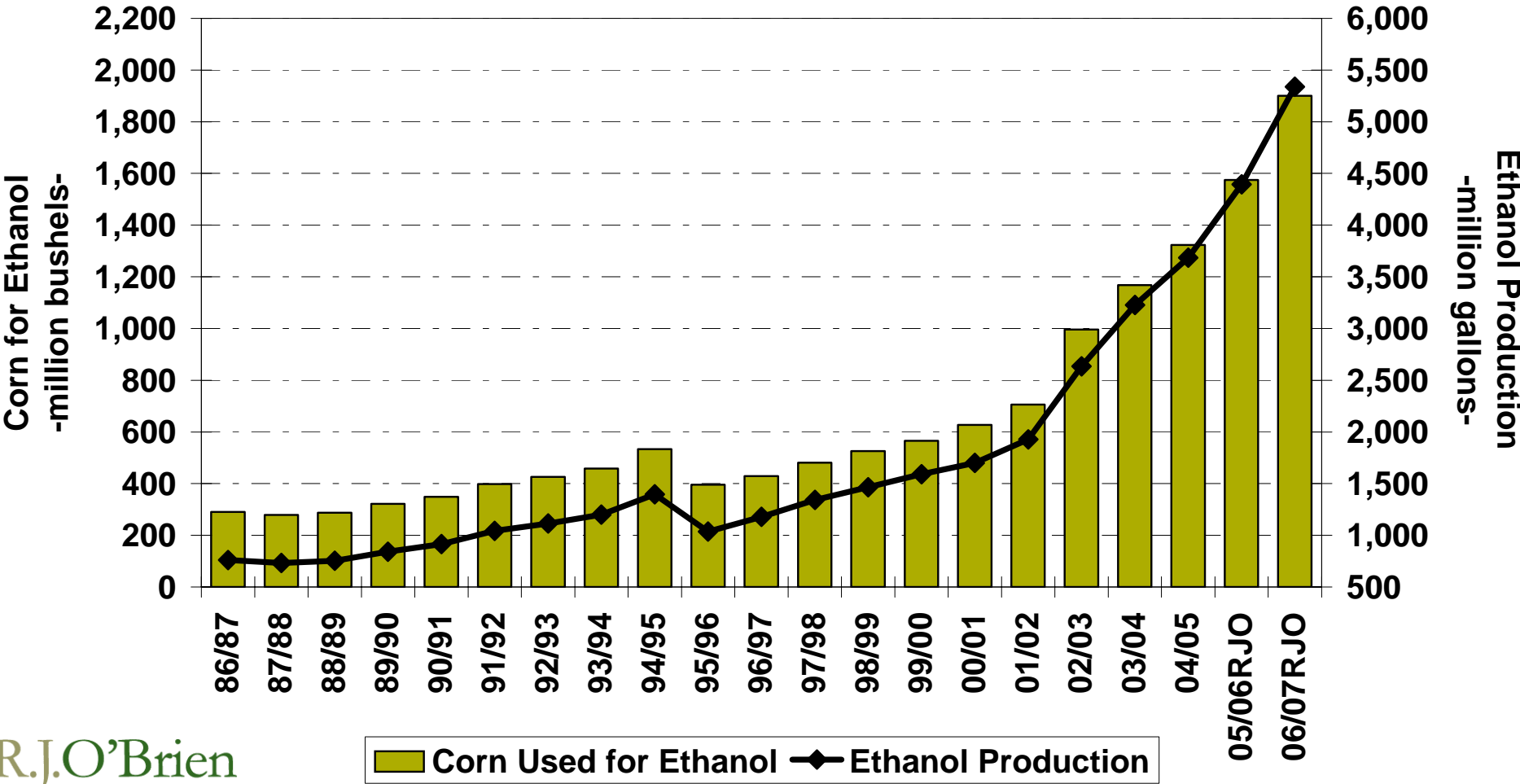
smarkham@csc-world.com



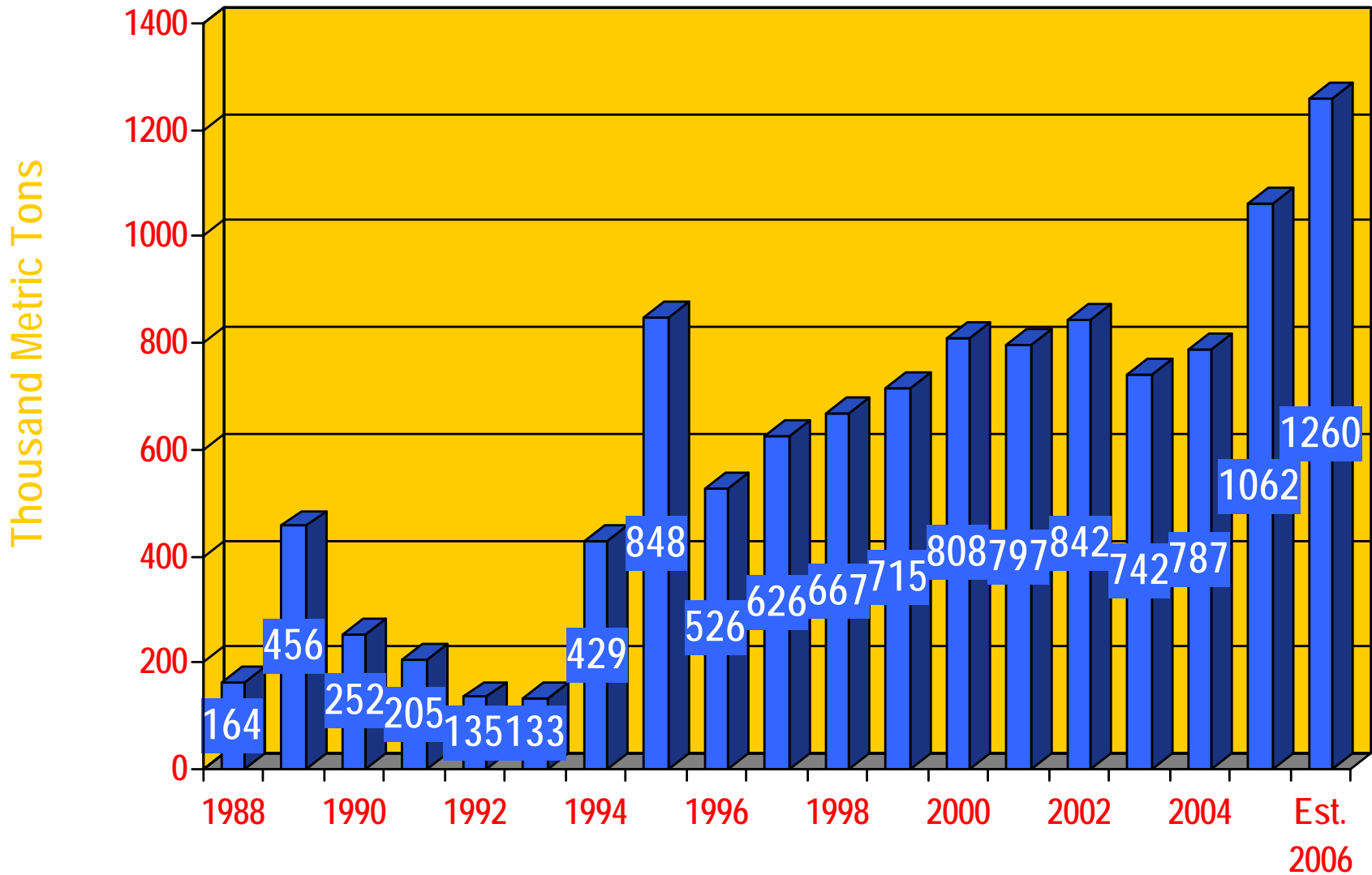
North American DDGS Production



U.S. Corn for Ethanol Production



U.S. DDGS Exports 1988-2006

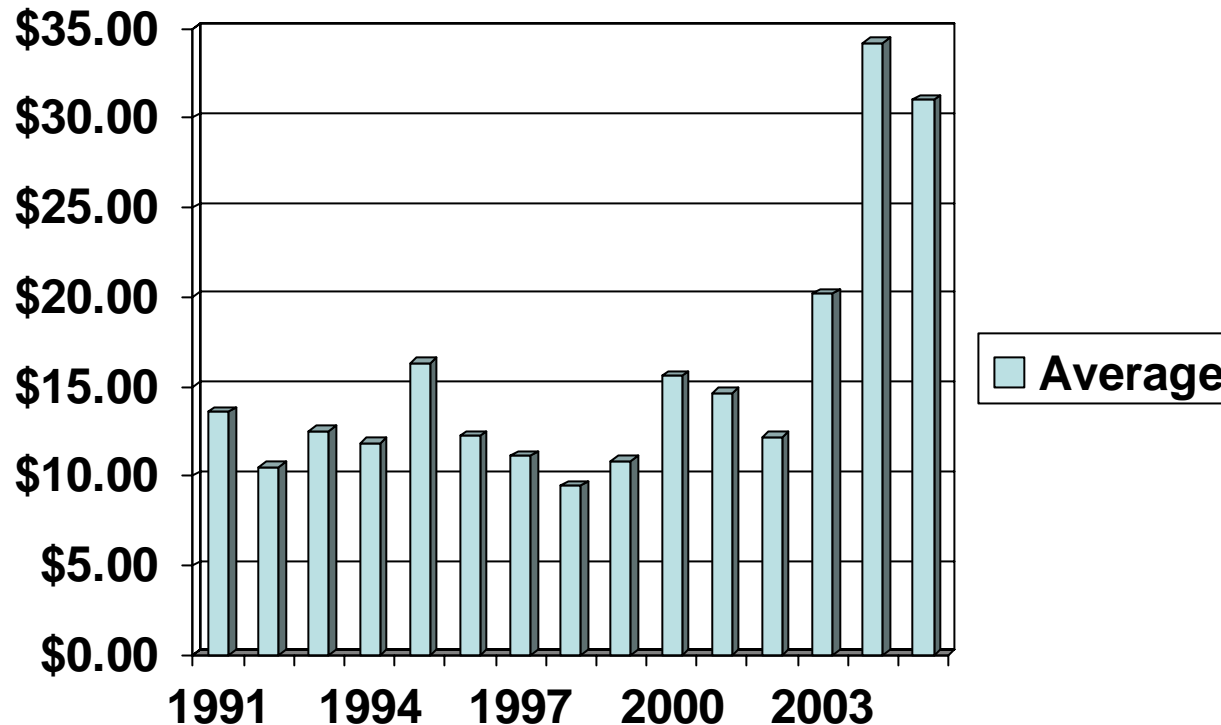


**UNITED STATES DEPARTMENT OF AGRICULTURE
FOREIGN AGRICULTURAL SERVICE**

AREA/COUNTRIES OF DESTINATION	EXPORT BY COUNTRY AND YEAR									
	1998	1999	2000	2001	2002	2003	2004	2005	Jan-2006*	
AUSTRALIA	0	0	5	0	28	0	0	0	0	
BERMUDA	0	0	0	0	5	0	0	0	0	
BAHAMAS, THE	0	0	0	0	30	0	0	0	0	
BANGLADESH	0	0	0	0	0	0	0	126	0	
BELIZE	0	0	0	0	0	0	0	169	0	
BRAZIL	6	0	0	0	0	0	0	0	0	
CANADA	12938	18305	21728	21260	30332	30898	82674	105240	9337	
CHINA, PEOPLES REPUB	0	0	0	0	0	60	54	0	0	
CHILE	0	0	0	33	0	3652	0	3607	0	
COLOMBIA	0	0	40442	48495	37702	10140	3849	2565	0	
COSTA RICA	0	0	0	0	26323	1779	6600	0	0	
CUBA	0	0	0	0	0	0	0	10043	0	
DENMARK	134226	144317	127901	162543	106103	72265	0	117	0	
DOMINICAN REPUBLIC	0	0	0	0	0	0	0	148	0	
IRELAND	178715	254127	219356	267265	297722	255398	185007	200438	32529	
EL SALVADOR	0	0	0	0	192	380	129	0	0	
FINLAND	0	0	0	0	0	380	2072	3747	0	
FRANCE	31814	20336	27427	2679	3000	0	0	431	431	
GERMANY	0	0	47708	16168	28333	580	5144	26213	0	
GUATEMALA	0	0	3065	10070	3849	13131	3998	0	0	
HONG KONG	0	0	88	0	0	0	0	0	0	
HONDURAS	0	0	912	0	0	1391	8024	5039	933	
INDONESIA	0	0	0	0	0	0	11516	46072	4470	
INDIA	1047	0	0	0	0	0	0	0	0	
ISRAEL	0	0	2786	0	0	12380	6366	47935	0	
ITALY	23049	8085	12746	0	22032	0	0	0	0	
JAPAN	5280	608	1466	26	40	15	0	2501	1410	
JAMAICA	0	0	4914	0	0	0	1490	774	0	
KOREA, REPUBLIC OF	0	0	0	14	0	70	625	4843	752	
MEXICO	12168	22255	35718	31319	30751	45721	66894	128271	15759	
MALAYSIA	0	0	0	0	0	0	12682	34015	1966	
MOROCCO	0	0	0	0	0	0	0	5499	0	
MOZAMBIQUE	0	0	0	0	87	0	0	0	0	
NETHERLANDS	7710	22697	16816	19439	14793	16445	36536	53749	0	
NICARAGUA	0	0	0	0	0	0	863	0	0	
PANAMA	43	0	0	0	1247	0	1184	0	0	
PORTUGAL	99865	69614	97039	67666	74209	52221	73396	57445	0	
QATAR	0	0	37	0	0	0	0	0	0	
PHILIPPINES	0	0	0	0	51	0	958	11758	3058	
SOUTH AFRICA, REPUB	0	0	0	0	0	0	546	1137	0	
SINGAPORE	0	0	0	0	0	0	163	0	0	
SPAIN	59666	63040	69199	39324	74677	40169	77176	110052	0	
UNITED ARAB EMIRATES	0	0	0	0	0	82	0	0	0	
THAILAND	0	62	0	0	0	61	10	12802	3669	
TAIWAN	0	57	80	0	0	0	7431	42225	8586	
TUNISIA	0	0	0	0	0	0	0	46	0	
TURKEY	0	0	0	0	0	0	0	216	0	
UNITED KINGDOM	100091	91272	69235	111165	86612	184742	188857	113874	130	
VENEZUELA	0	0	9240	0	4023	0	1726	10579	0	
VIETNAM	0	0	0	0	0	0	633	19869	0	
TOTAL	666618	714775	807908	797466	842141	741960	786603	1061545	83030	
SOURCE:	Department of Commerce, U.S. Census Bureau, Foreign Trade Statistics									
	* - Data for month of January 2006 (4/11/06)									

Average Monthly Freight Rates U.S. Gulf to Holland

January 1991 – December 2005



Basis: 55,000 mt vessels
55 cu. ft. per long ton stowage (HSS)
Dollars per mt

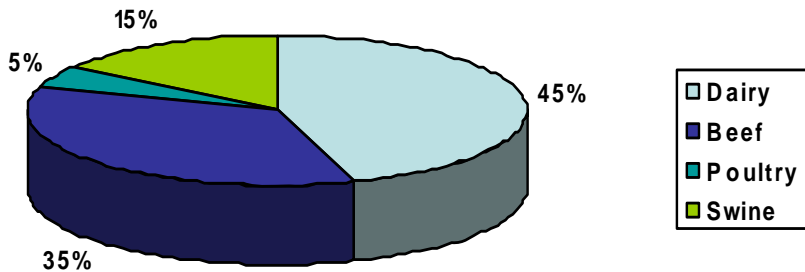
Credit to Don Morrison,
The Rice Company-Krohn Div.



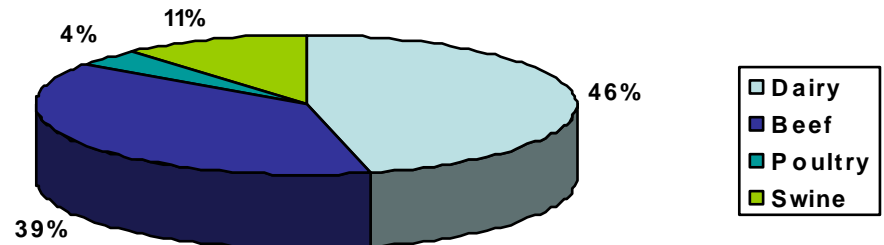
CSC 2006

U.S. DDGS Consumption

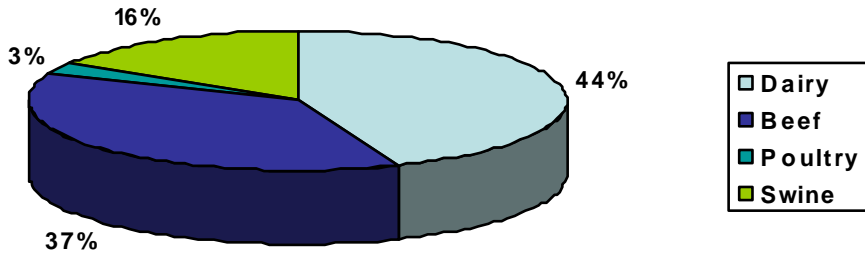
Estimate 2002



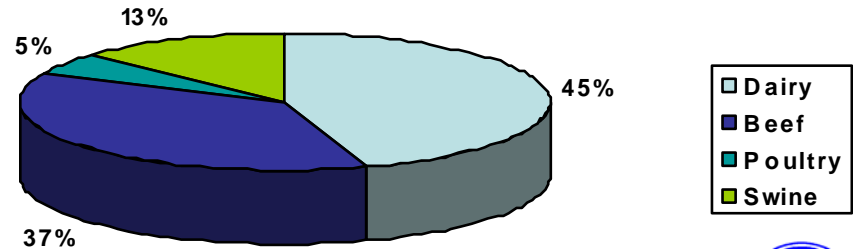
Estimate 2003



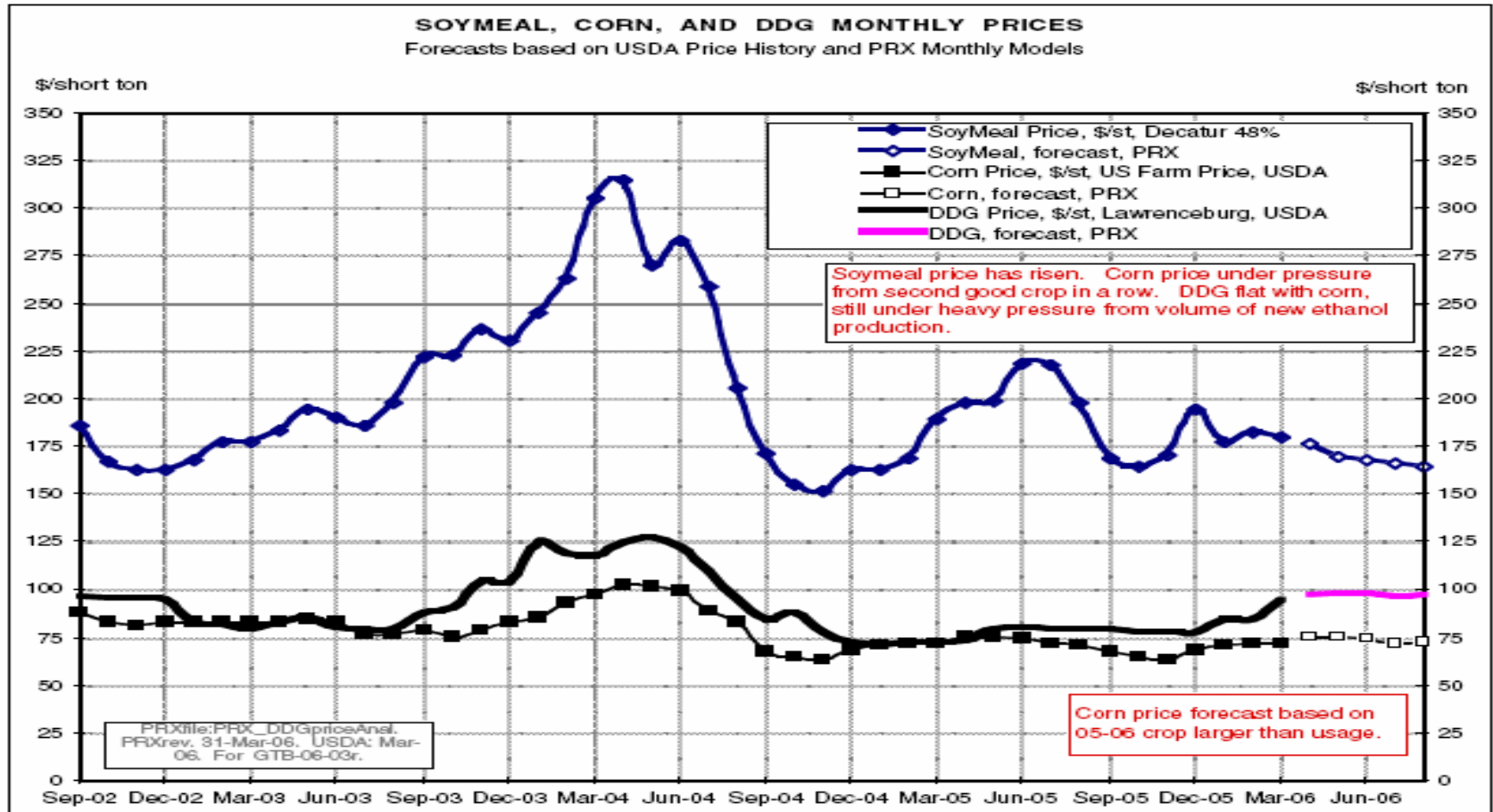
Estimate 2004



Estimate 2005



Soymeal, Corn, and DDG Monthly Prices



DDG Price Spreads vs. Lawrenceburg: IL, +0 to +5; MN, -5 to -7; NE, +10 to +15. USDA Grain Market News.

Data provided by The ProExporter Network



Potential DDGS Usage by Species (mt)

Dairy		10.2 million GCAU		
		Market Penetration		
		50%	75%	100%
DDGS share of ration	10%	944	1,415	1,887
	20%	1,887	2,831	3,774
	30%	2,831	4,246	5,661
	40%	3,774	5,661	7,548

Beef		24.8 million GCAU		
		Market Penetration		
		50%	75%	100%
DDGS share of ration	10%	2,294	3,441	4,588
	20%	4,588	6,882	9,176
	30%	6,882	10,323	13,764
	40%	9,176	13,764	18,352

Pork		23.5 million GCAU		
		Market Penetration		
		50%	75%	100%
DDGS share of ration	10%	2,174	3,261	4,348
	12%	2,609	3,913	5,217
	15%	3,261	4,891	6,521
	20%	4,348	6,521	8,695

Poultry		31.1 million GCAU		
		Market Penetration		
		50%	75%	100%
DDGS share of ration	5%	1,438	2,158	2,877
	8%	2,301	3,452	4,603
	10%	2,877	4,315	5,754

All Species	Total Use (mt)
50% Market Penetration with Lower Limit Inclusion Levels:	6,850
50% Market Penetration with Upper Limit Inclusion Levels:	20,175
75% Market Penetration with Lower Limit Inclusion Levels:	10,275
75% Market Penetration with Upper Limit Inclusion Levels:	30,261
100% Market Penetration with Lower Limit Inclusion Levels:	13,700
100% Market Penetration with Upper Limit Inclusion Levels:	40,349

Note:
 *Grain used per grain-consuming animal unit in 2004-'05 is 1.85 tons (USDA-ERS, April 2005)
 *GCAU data from USDA-ERS Feed Situation and Outlook Yearbook/April 2005
 *GCAU is a figure used by USDA to simplify feed calculations. GCAU converts all animals into an equivalent amount of dairy cows for the sake of comparison.



STATE

FLORIDA

GEORGIA

ALABAMA

LIVESTOCK

HOGS/PIGS	(HEAD)	20	275	180
BEEF COWS	(HEAD)	952	596	732
MILK COWS	(HEAD)	138	84	18
BROILER	(CHICKS PLACED)	1714	26376	21136
CATFISH	(TOTAL FOOD SIZE)	745	885	66000

NUMBERS IN THOUSANDS

USDA



www.ddgs.umn.edu

